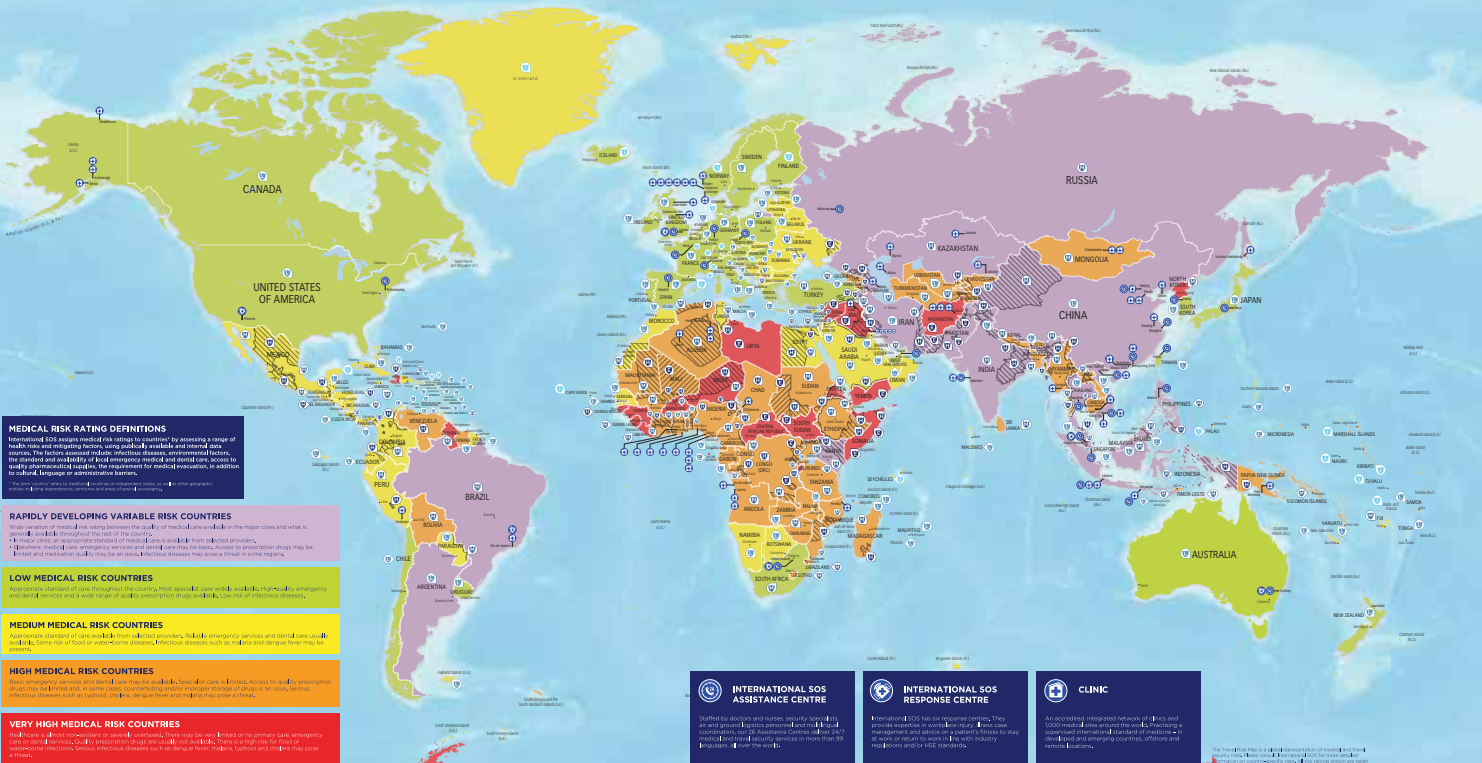


TRAVEL RISK MAP 2018

Global health and travel security risks review



WORLDWIDE REACH. HUMAN TOUCH.



MEDICAL RISK RATING DEFINITIONS
 International SOS assigns medical risk ratings to countries by assessing a range of health care and safety factors, using methods available and internal data. The ratings are based on the following criteria: availability of health care, the standard and availability of local emergency medical and dental care, access to quality pharmaceuticals, the requirement for medical evacuations, in addition to cultural, language or administrative barriers.

RAPIDLY DEVELOPING VARIABLE RISK COUNTRIES
 While access to medical care varies between the major cities and what is available in rural areas, the level of the country is:
 • In many cases, an intermediate standard of medical care is available from accredited providers.
 • In some instances, emergency care and dental care may be basic. Access to pharmaceuticals may be limited and medication quality may be an issue. Medical diseases may pose a threat to some regions.

LOW MEDICAL RISK COUNTRIES
 Adequate standard of care throughout the country. Most specialist care available, high quality emergency and dental services and a wide range of quality pharmaceuticals, care and professional services.

MEDIUM MEDICAL RISK COUNTRIES
 Adequate standard of care available from accredited providers, health emergency services and dental care available. Some specialist services may be limited. Access to pharmaceuticals may be restricted.

HIGH MEDICAL RISK COUNTRIES
 Basic emergency care and dental care may be available. Specialist care is available, but access to quality pharmaceuticals may be limited. Areas of concern exist, such as limited access to emergency dental care or limited access to pharmaceuticals. High quality emergency and dental care may be available in major cities.

VERY HIGH MEDICAL RISK COUNTRIES
 High level of health inequity or overall healthcare. No high quality care available in the primary care, emergency or specialist services. Limited access to pharmaceuticals. High quality emergency and dental care may be available in major cities.

TRAVEL SECURITY RISK RATING DEFINITIONS
 The Global Security Risk Rating evaluates the threat posed to travellers and international assignees by political, social and crime risks, and emergency response. It is based on the following criteria: the stability of the country and the availability of local emergency services and the country's accessibility to medical evacuations and the likelihood that there are any of sufficient magnitude to impact the overall environment for travellers.

INSIGNIFICANT TRAVEL RISK
 Rates of crime are very low. There is no significant political or social or crime-related risk. Local emergency and security services are available and of a high standard. Political, social and crime-related risks are minimal.

LOW TRAVEL RISK
 High crime rates are low and local assistance and/or evacuation services are available. Political, social and crime-related risks are minimal.

MEDIUM TRAVEL RISK
 Periodic incidents of terrorism, insurgency and/or sporadic acts of terrorism are present. Local emergency and security services are available and of a high standard. Political, social and crime-related risks are minimal.

HIGH TRAVEL RISK
 Threats are frequent, evident and may target or impact travellers. Local emergency and security services are available and of a high standard. Political, social and crime-related risks are minimal.

EXTREME TRAVEL RISK
 Government control is weak and order may be threatened. Local emergency and security services are available and of a high standard. Political, social and crime-related risks are minimal.

REGIONAL VARIATIONS
 Threat Security Risk Zones are areas within a country where the risks faced by travellers and international assignees are different from the country overall. Government policies, necessitating a different level of preparation.

INTERNATIONAL SOS ASSISTANCE CENTRE
 Staffed by doctors and nurses, security specialists and other trained Response Personnel (RPs), the International SOS Assistance Centres offer 24/7 medical, travel and security assistance to travellers and assignees.

INTERNATIONAL SOS RESPONSE CENTRE
 International SOS has six response centres. They provide emergency medical, security, travel management and advice on a partner's fitness to travel and on evacuation to a safe country.

CLINIC
 An accredited, integrated network of clinics and 1000 medical professionals provide a range of services including medical evacuations, emergency medical and dental services, and general medical services.

The Global Security Risk Rating is a proprietary tool of medical and security risk assessment. It is based on a range of data and is subject to change without notice.

Control Risks